

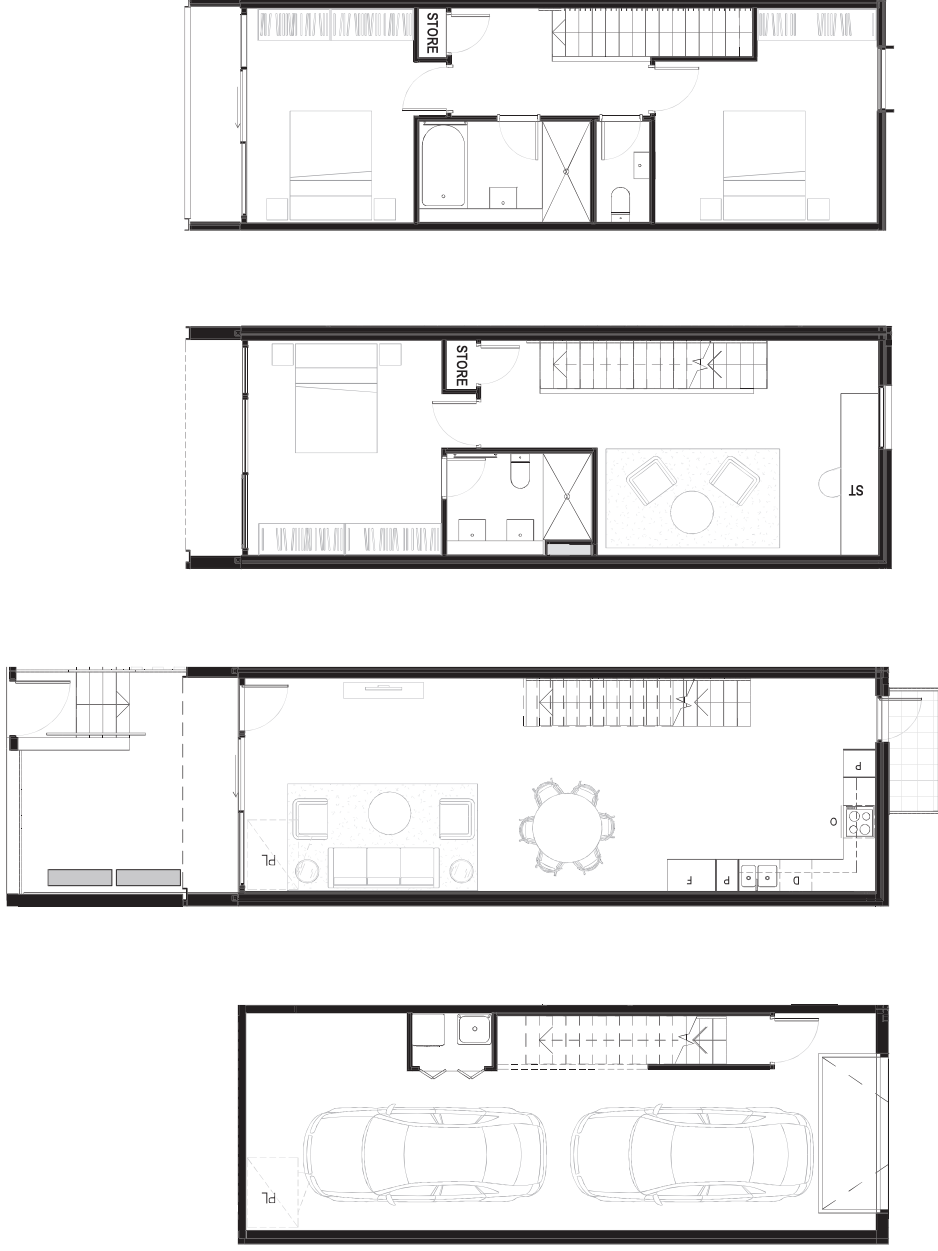
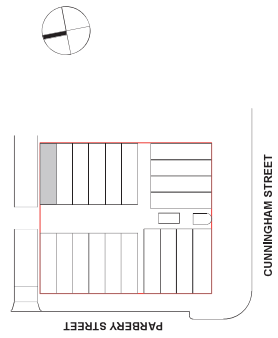


Terrace No.

12

Bedrooms	— 3 or 4
Bathrooms	— 2
Carspaces	— 2
Lower Ground Garage	— 47.8m ²
Upper Ground Courtyard	— 16.8m ²
Upper Ground living	— 53.7m ²
Upper Ground Balcony	— 2.3m ²
Level 1 living	— 49.1m ²
Level 2 living	— 48.2m ²
level 2 Balcony	— 4.2m ²
Total	— 222.1m ²

SCALE 1:100 @ A3



Level 2

Level 1

Upper Ground

Lower Ground

Area calculations is for gross floor area & is measured to the outside face of the external walls & common area walls & to the centreline of party walls & includes riser shafts & vertical service ducts. Balcony area is measured to the inside face of balustrades. Room dimensions are shown from centreline of walls. Any dimension & areas shown are indicative only & may be varied subject to detail design & authority requirements. A contingency of 3% is to be allowed for as an estimate of the potential reduction in floor areas associated with the design development of services to the buildings.

INDEPENDENT
PROJECTS

KINGS
BOROUGH