

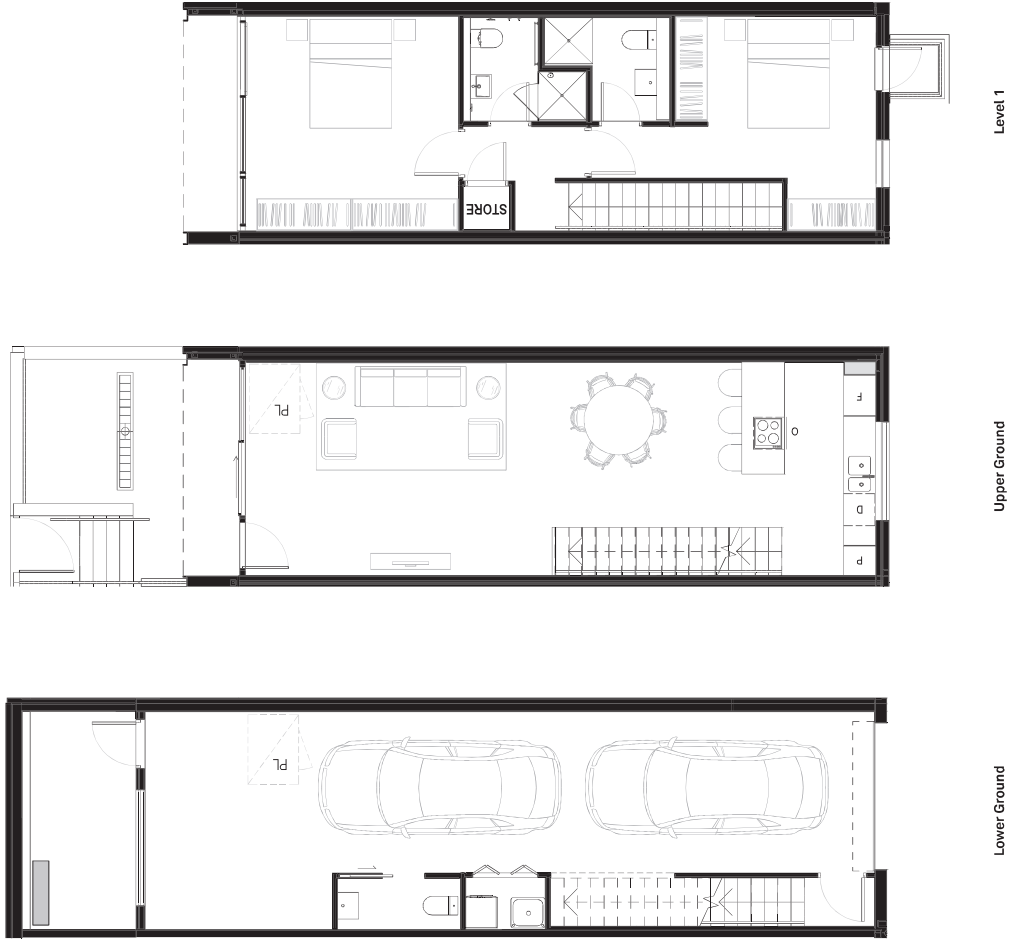
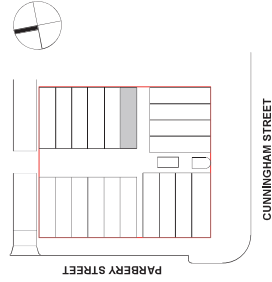


Terrace No.

7

Bedrooms	— 2
Bathrooms	— 2.5
Carspaces	— 2
Lower Ground Garage	— 55.2m ²
Lower Ground Courtyard	— 9.7m ²
Upper Ground living	— 53.9m ²
Upper Ground Courtyard	— 17.1m ²
Level 1 living	— 49.4m ²
Level 1 Balcony	— 1.0m ²
Total	— 186.0m²

SCALE 1:100 @ A3



Area calculations is for gross floor area & is measured to the outside face of the external walls & common area walls & to the centreline of party walls & includes riser shafts & vertical service ducts. Balcony area is measured to the inside face of balustrades. Room dimensions are shown from centreline of walls. Any dimension & areas shown are indicative only & may be varied subject to detail design & authority requirements. A contingency of 3% is to be allowed for as an estimate of the potential reduction in floor areas associated with the design development of services to the buildings.

INDEPENDENT
PROJECTS

KINGS
BOROUGH