

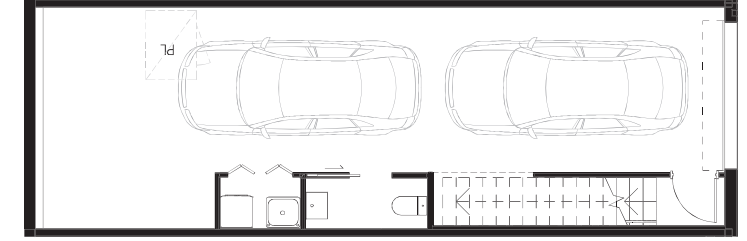
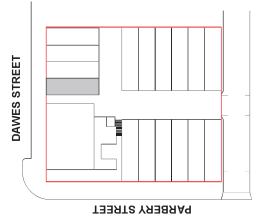


Terrace No.

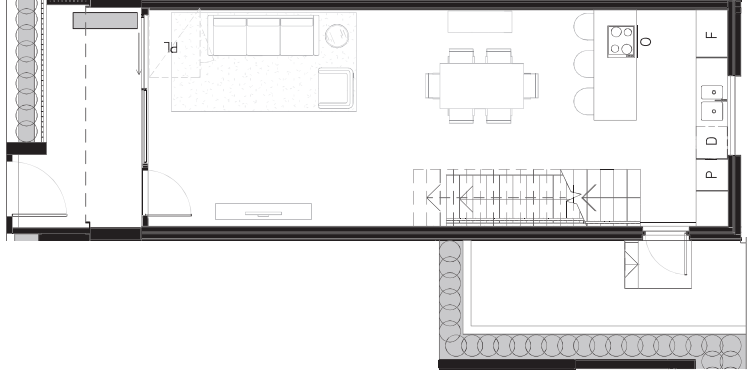
1

- Bedrooms — 3 or 4
- Bathrooms — 2.5
- Carspaces — 2
- Lower Ground Garage — 56.5m<sup>2</sup>
- Upper Ground Courtyard — 8.6m<sup>2</sup>
- Upper Ground living level 1 Courtyard — 47.5m<sup>2</sup>
- Level 1 living — 8.2m<sup>2</sup>
- Level 2 living — 49.3m<sup>2</sup>
- level 2 Balcony — 4.4m<sup>2</sup>
- Total — 218.4m<sup>2</sup>

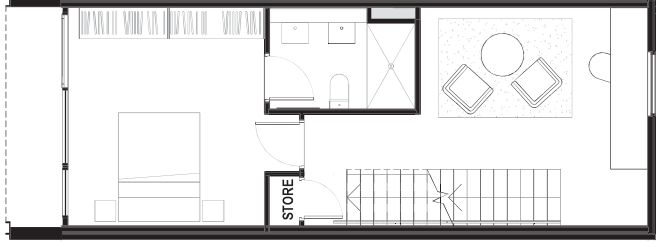
SCALE 1:100 @ A3



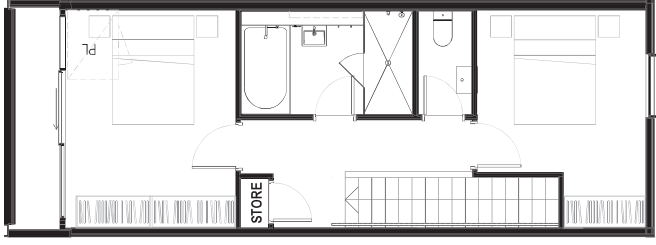
Lower Ground



Upper Ground



Level 1



Level 2

Area calculations is for gross floor area & is measured to the outside face of the external walls & common area walls & to the centreline of party walls & includes riser shafts & vertical service ducts. Balcony area is measured to the inside face of balustrades. Room dimensions are shown from centreline of walls. Any dimension & areas shown are indicative only & may be varied subject to detail design & authority requirements. A contingency of 3% is to be allowed for as an estimate of the potential reduction in floor areas associated with the design development of services to the buildings.

INDEPENDENT PROJECTS

KINGS BOROUGH