



PRICE - \$619,900

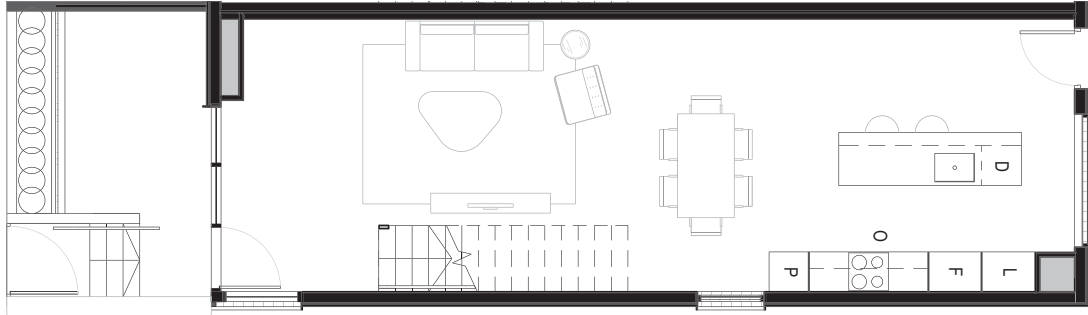
CAR SPACES - 1 (option to buy 2nd space for \$38,000)

RENTAL ESTIMATE - \$600 pw approx.

BODY COPORATE - \$2507 pa

ASPECT - SOUTH FACING

Upper Ground

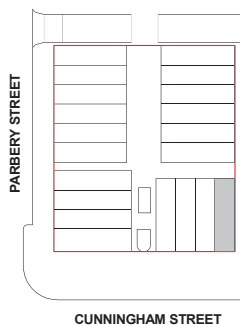


Level 1



**TRACKSIDE
Apartment No.**

4



Bedrooms — 2

Bathrooms — 2

Carspaces — 1

Upper Ground Courtyard — 10.3m²

Upper Ground Living — 58.9m²

Level 1 Living — 44.1m²

Total Area — 113.3m²