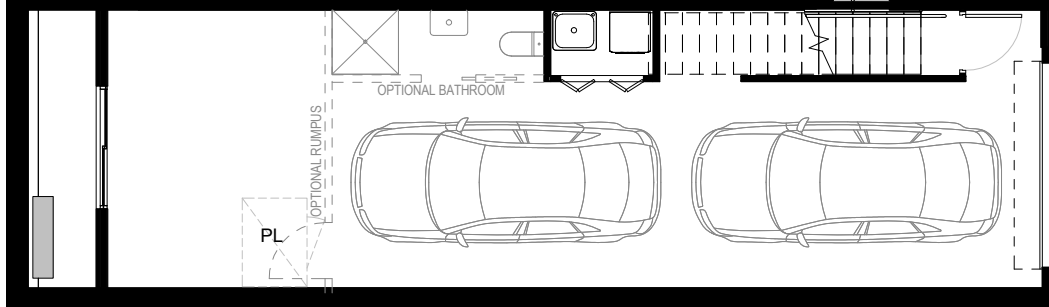
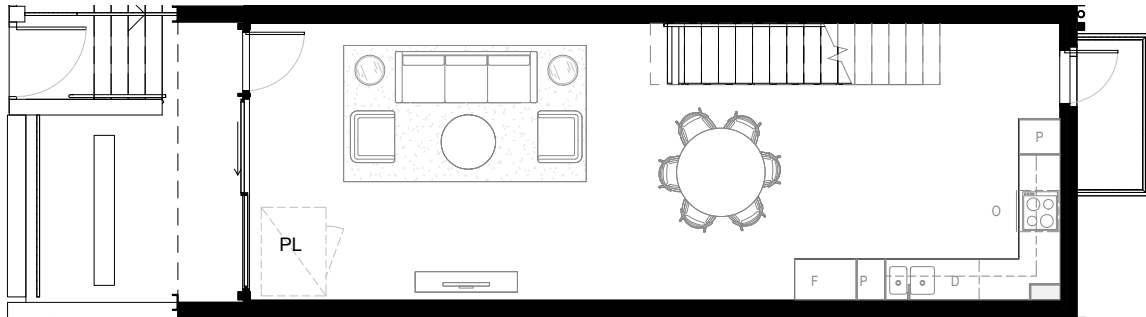


PRICE - \$829,900
RENTAL ESTIMATE - \$800 pw approx.
BODY COPORATE - \$2,685 pa
ASPECT - WEST FACING
 INDIVIDUAL SOLAR SYSTEM

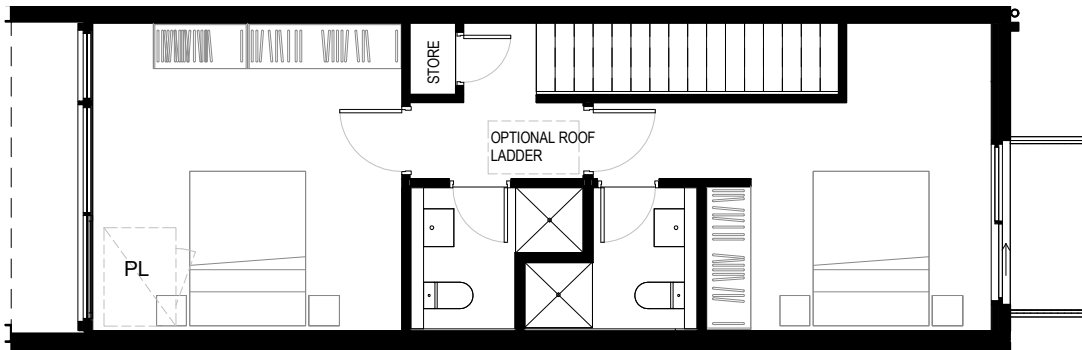
KINGS
BOROUGH



Lower Ground



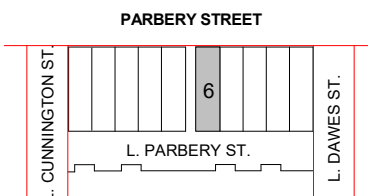
Upper Ground



Level 1

PARBERRY ST
Terrace No.

206



Level	Zone	Area
LOWER GROUND	GARAGE	57.6 m ²
LOWER GROUND	COURTYARD	6.2 m ²
UPPER GROUND	BALCONY	2.4 m ²
UPPER GROUND	LIVING	54.1 m ²
UPPER GROUND	COURTYARD	14.3 m ²
LEVEL 1	LIVING	49.4 m ²
LEVEL 1	BALCONY	2.3 m ²
TOTAL		186.4 m²

LOWER GROUND
 BATHROOM - 3.3 m²
 LAUNDRY - 1.6 m²
 OPTIONAL RUMPUS - 13.0 m²

Area calculations is for gross floor area & is measured to the outside face of the external walls & common area walls & to the centreline of party walls & includes riser shafts & vertical service ducts. Balcony area is measured to the inside face of balustrades. Room dimensions are shown from centreline of walls. Any dimension & areas shown are indicative only & may be varied subject to detail design & authority requirements. A contingency of 3% is to be allowed for as an estimate of the potential reduction in floor areas associated with the design development of services to the buildings.