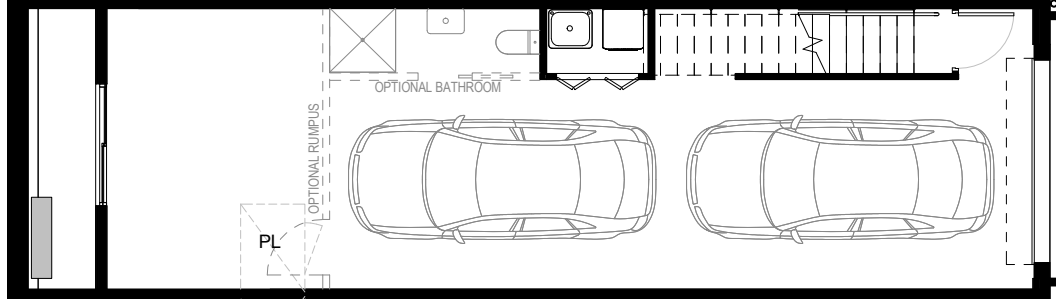
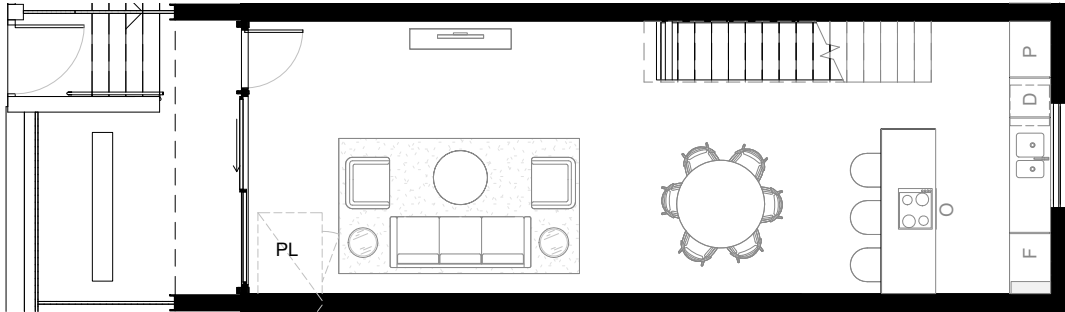


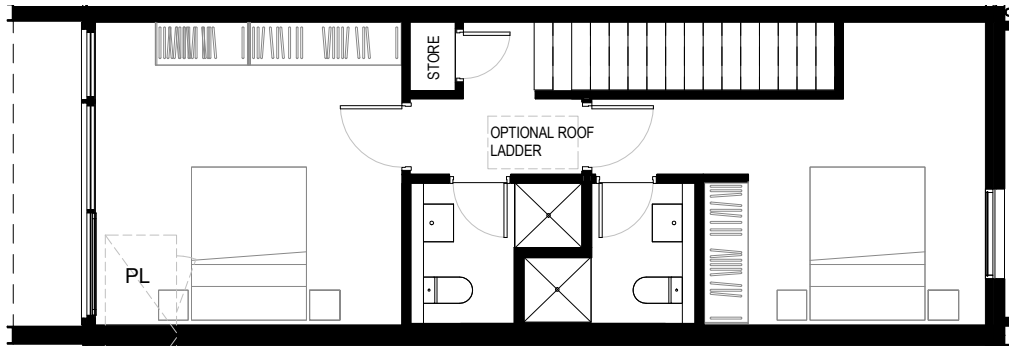
PRICE - \$819,900
RENTAL ESTIMATE - \$800 pw approx.
BODY COPORATE - \$2,611 pa
ASPECT - WEST FACING
 INDIVIDUAL SOLAR SYSTEM



Lower Ground



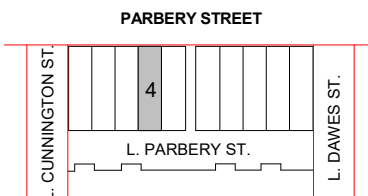
Upper Ground



Level 1

PARBERRY ST
Terrace No.

204



Level	Zone	Area
LOWER GROUND	GARAGE	55.4 m ²
LOWER GROUND	COURTYARD	6.0 m ²
UPPER GROUND	LIVING	52.3 m ²
UPPER GROUND	COURTYARD	14.4 m ²
LEVEL 1	LIVING	47.7 m ²
TOTAL		175.7 m²

LOWER GROUND
 BATHROOM - 3.3 m²
 LAUNDRY - 1.6 m²
 OPTIONAL RUMPUS - 13.0 m²

Area calculations is for gross floor area & is measured to the outside face of the external walls & common area walls & to the centreline of party walls & includes riser shafts & vertical service ducts. Balcony area is measured to the inside face of balustrades. Room dimensions are shown from centreline of walls. Any dimension & areas shown are indicative only & may be varied subject to detail design & authority requirements. A contingency of 3% is to be allowed for as an estimate of the potential reduction in floor areas associated with the design development of services to the buildings.