



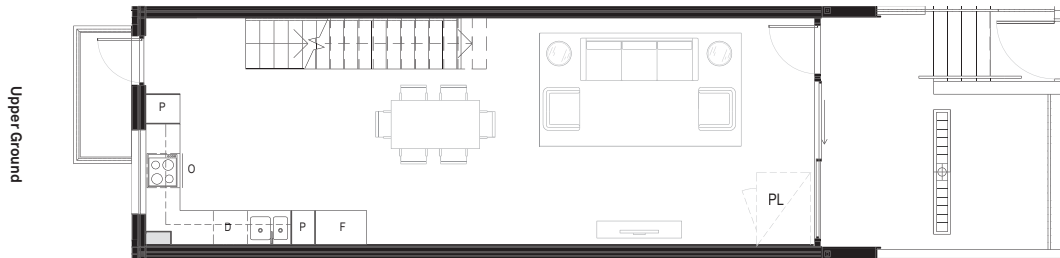
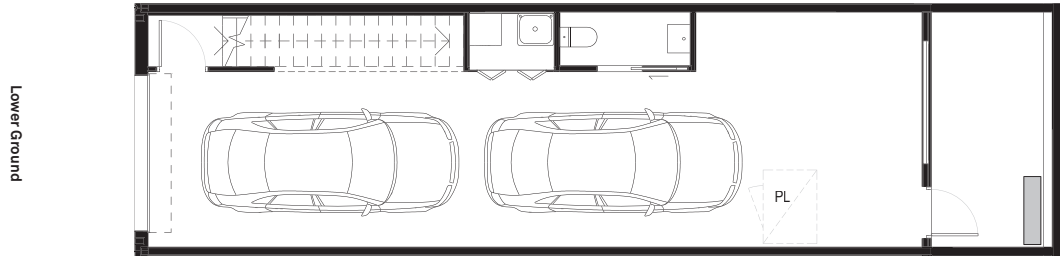
PRICE - \$799,900

RENTAL ESTIMATE - \$800 pw approx.

BODY COPORATE - \$1817 pa

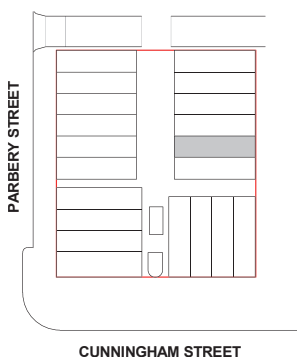
ASPECT - EAST FACING

INDIVIDUAL SOLAR SYSTEM



PARBERRY LN
Terrace No.

308



Bedrooms	— 2
Bathrooms	— 2
Carspaces	— 2

Lower Ground Garage	— 60.4m ²
Lower Ground Courtyard	— 9.4m ²
Upper Ground living	— 52.4m ²
Upper Ground Courtyard	— 17.0m ²
Level 1 living	— 48.3m ²
Total	— 187.5m²

Area calculations is for gross floor area & is measured to the outside face of the external walls & common area walls & to the centreline of party walls & includes riser shafts & vertical service ducts. Balcony area is measured to the inside face of balustrades. Room dimensions are shown from centreline of walls. Any dimension & areas shown are indicative only & may be varied subject to detail design & authority requirements. A contingency of 3% is to be allowed for as an estimate of the potential reduction in floor areas associated with the design development of services to the buildings.