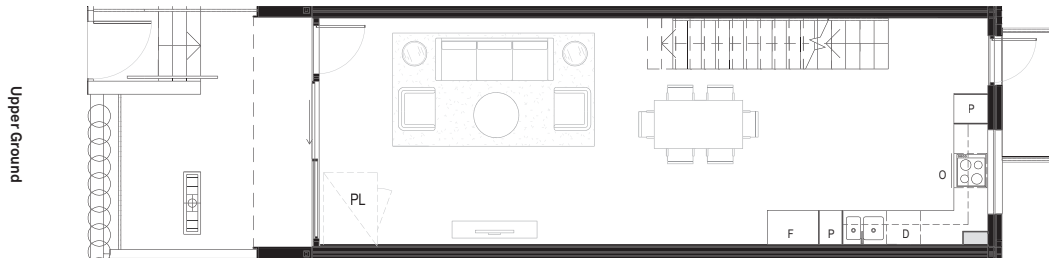
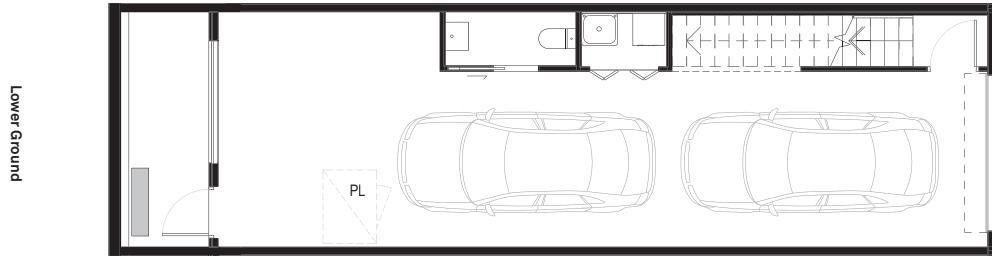


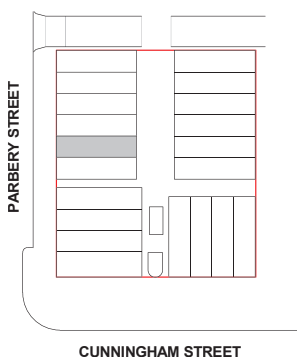


**PRICE** - \$819,900  
**RENTAL ESTIMATE** - \$800 pw approx.  
**BODY CORPORATE** - \$1817 pa  
**ASPECT** - WEST FACING  
 INDIVIDUAL SOLAR SYSTEM



**PARBERRY LN  
Terrace No.**

**305**



Bedrooms	— 2
Bathrooms	— 2.5
Carspaces	— 2
Lower Ground Garage	— 51.6m <sup>2</sup>
Lower Ground Courtyard	— 7.3m <sup>2</sup>
Upper Ground living	— 53.8m <sup>2</sup>
Upper Ground Courtyard	— 14.9m <sup>2</sup>
Level 1 living	— 49.2m <sup>2</sup>
Level 1 Balcony	— 1.0m <sup>2</sup>
<b>Total</b>	<b>— 177.8m<sup>2</sup></b>

Area calculations is for gross floor area & is measured to the outside face of the external walls & common area walls & to the centreline of party walls & includes riser shafts & vertical service ducts. Balcony area is measured to the inside face of balustrades. Room dimensions are shown from centreline of walls. Any dimension & areas shown are indicative only & may be varied subject to detail design & authority requirements. A contingency of 3% is to be allowed for as an estimate of the potential reduction in floor areas associated with the design development of services to the buildings.