



PRICE - \$609,900

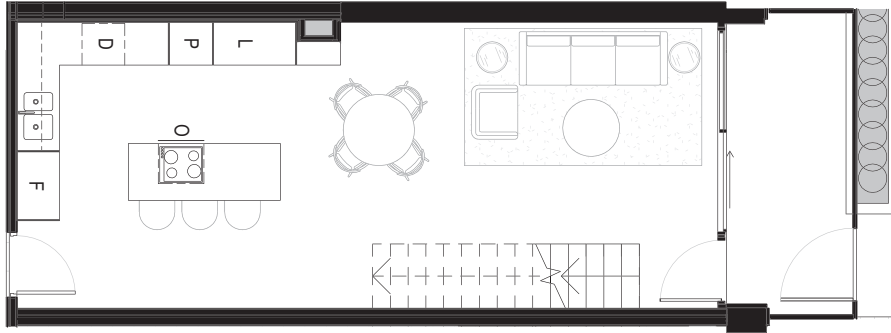
CAR SPACES - 1 (option to buy 2nd space for \$38,000)

RENTAL ESTIMATE - \$550 pw approx.

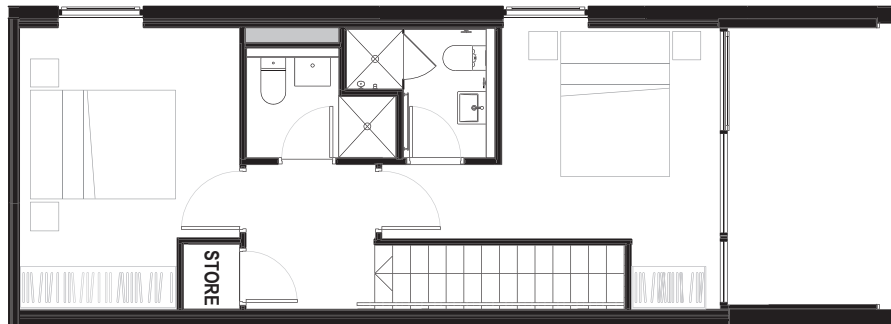
BODY COPORATE - \$2992 pa

ASPECT - NORTH FACING

Upper Ground

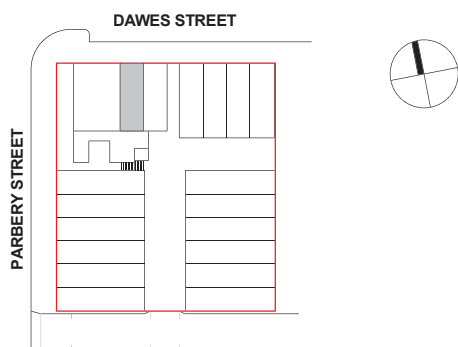


Level 1



DAWESTON
Apartment No.

3



Bedrooms	— 2
Bathrooms	— 2
Carspaces	— 1

Upper Ground Courtyard	— 7m ²
Upper Ground Living	— 42m ²
Level 1 Living	— 38m ²
Total Area	— 87m

Area calculations is for gross floor area & is measured to the outside face of the external walls & common area walls & to the centreline of party walls & includes riser shafts & vertical service ducts. Balcony area is measured to the inside face of balustrades. Room dimensions are shown from centreline of walls. Any dimension & areas shown are indicative only & may be varied subject to detail design & authority requirements. A contingency of 3% is to be allowed for as an estimate of the potential reduction in floor areas associated with the design development of services to the buildings.