



**PRICE** - \$649,900

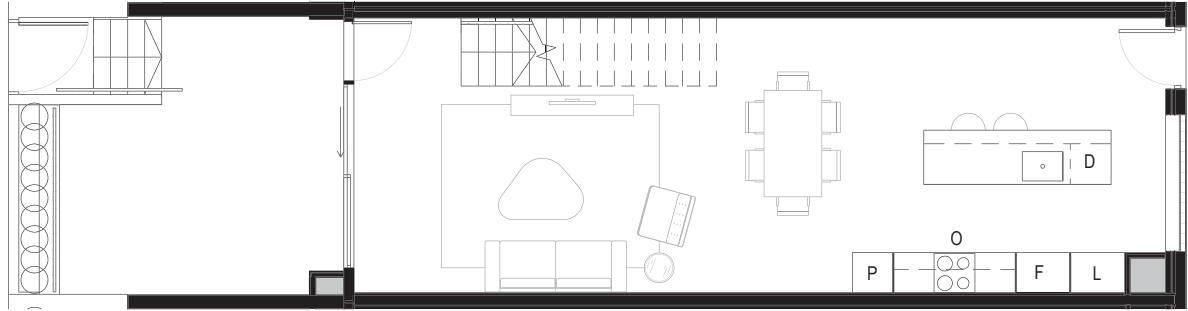
**CAR SPACES** - 1 (option to buy 2nd space for \$38,000)

**RENTAL ESTIMATE** - \$600 pw approx.

**BODY COPORATE** - \$2865 pa

**ASPECT** - WEST FACING

Upper Ground

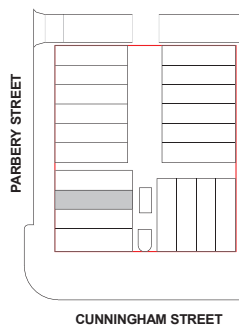


Level 1



**CROWN**  
**Apartment No.**

**7**



Bedrooms — 2

Bathrooms — 2

Carspaces — 1

Upper Ground Courtyard — 17.8m<sup>2</sup>

Upper Ground Living — 53.2m<sup>2</sup>

Level 1 Living — 47.6m<sup>2</sup>

**Total Area — 118.6m<sup>2</sup>**