



PRICE - \$649,900

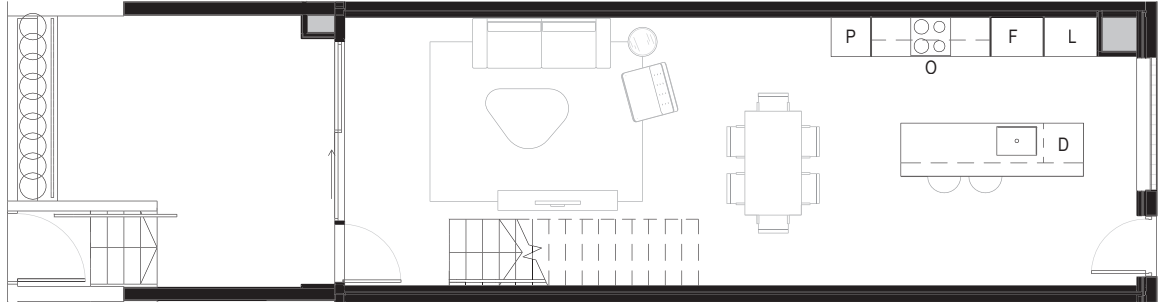
CAR SPACES - 1 (option to buy 2nd space for \$38,000)

RENTAL ESTIMATE - \$600 pw approx.

BODY COPORATE - \$2865 pa

ASPECT - WEST FACING

Upper Ground

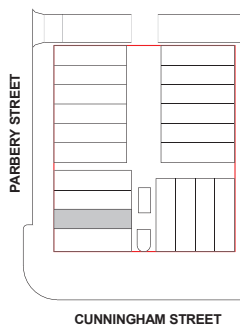


Level 1



CROWN
Apartment No.

6



Bedrooms — 2

Bathrooms — 2

Carspaces — 1

Upper Ground Courtyard — 17.8m²

Upper Ground Living — 53.2m²

Level 1 Living — 47.6m²

Total Area — 118.6m²